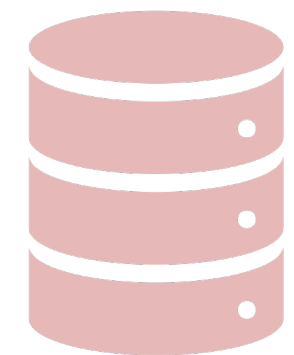


1. GeoNet Dataset



205 #classes 600

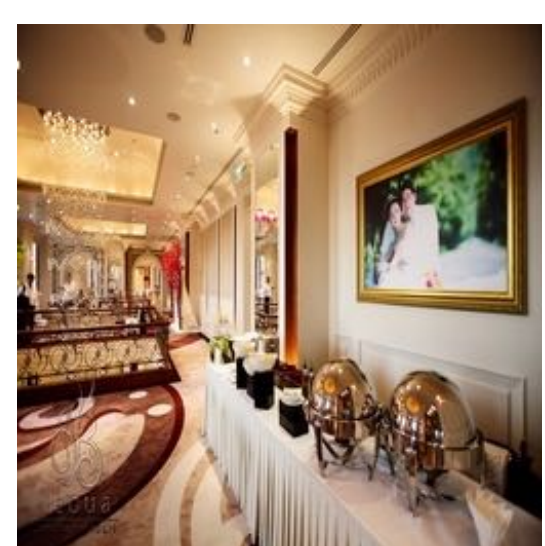
400,000 #images 300,000

Scene Recognition

Object Classification



Restaurant



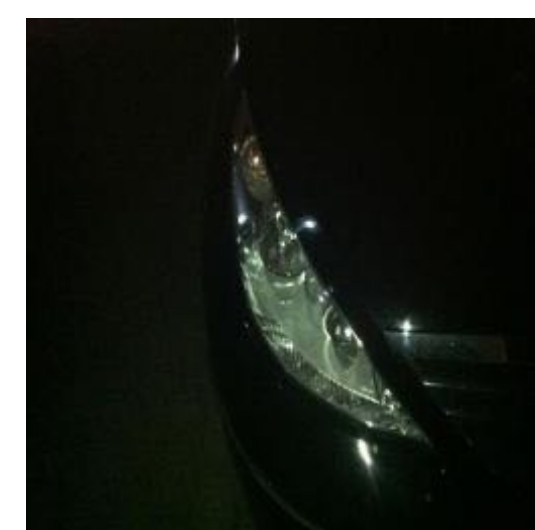
Freight Car



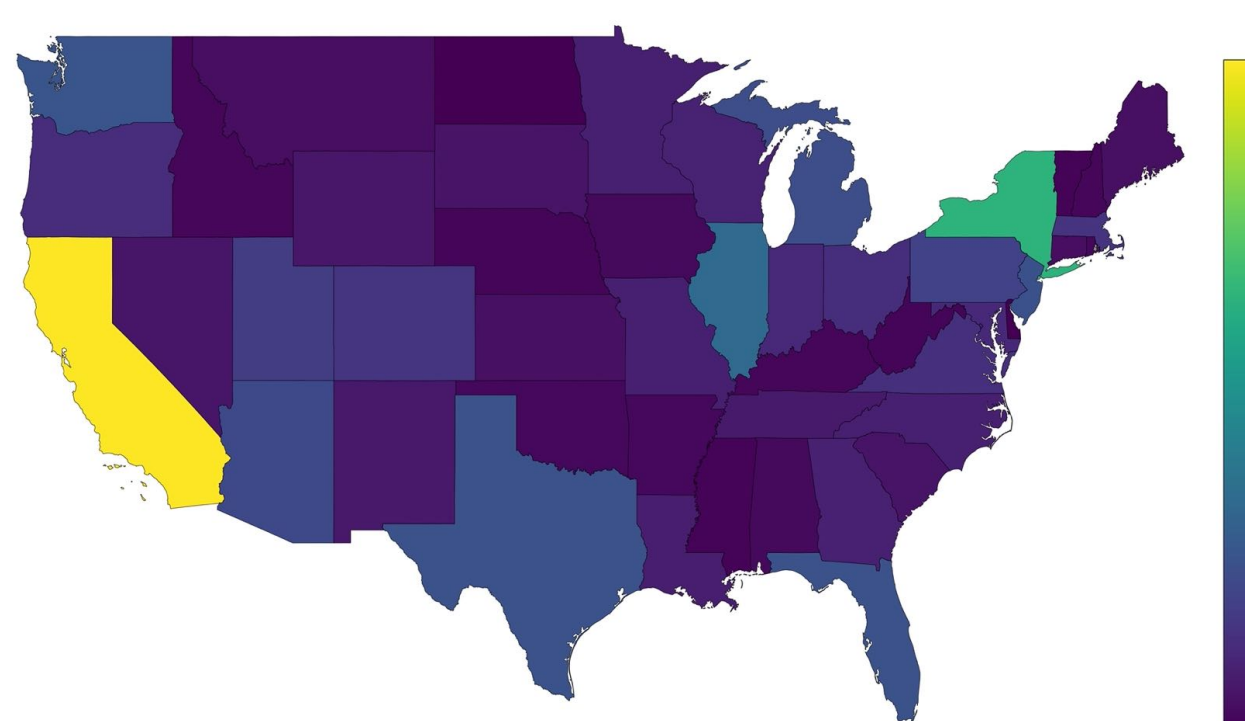
Shopfront



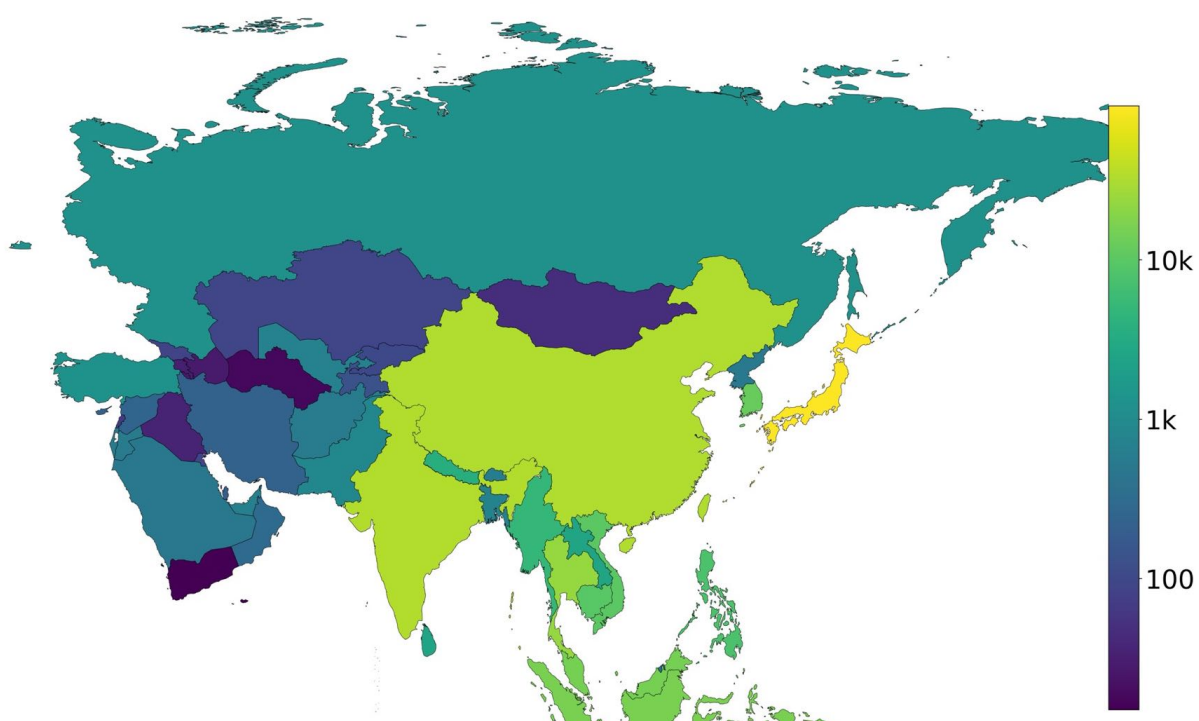
Headlight



Geographical Image Distribution in GeoNet



USA



Asia

We study the significant accuracy drop observed on images from under-represented geographies.



2. GeoNet Analysis

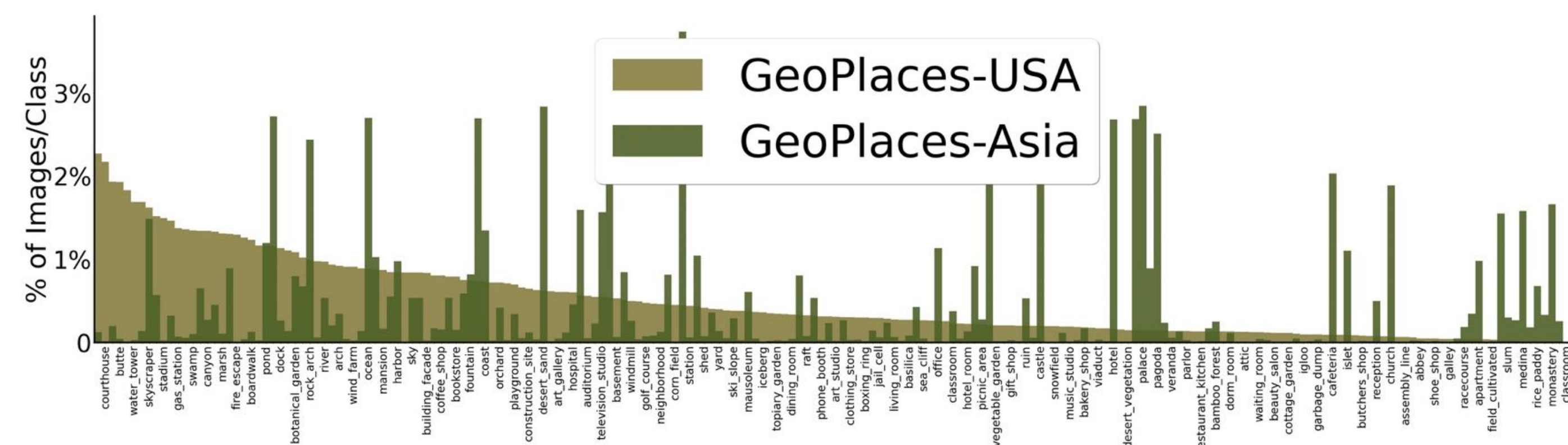
$$P(x, y) = P(b_x|y) \cdot P(f_x|y) \cdot P(y)$$

Context Shift
 $P_s(b_x|y) \neq P_t(b_x|y)$
 Background of scenes shift across domains

Design Shift
 $P_s(f_x|y) \neq P_t(f_x|y)$
 Design of objects change across domains

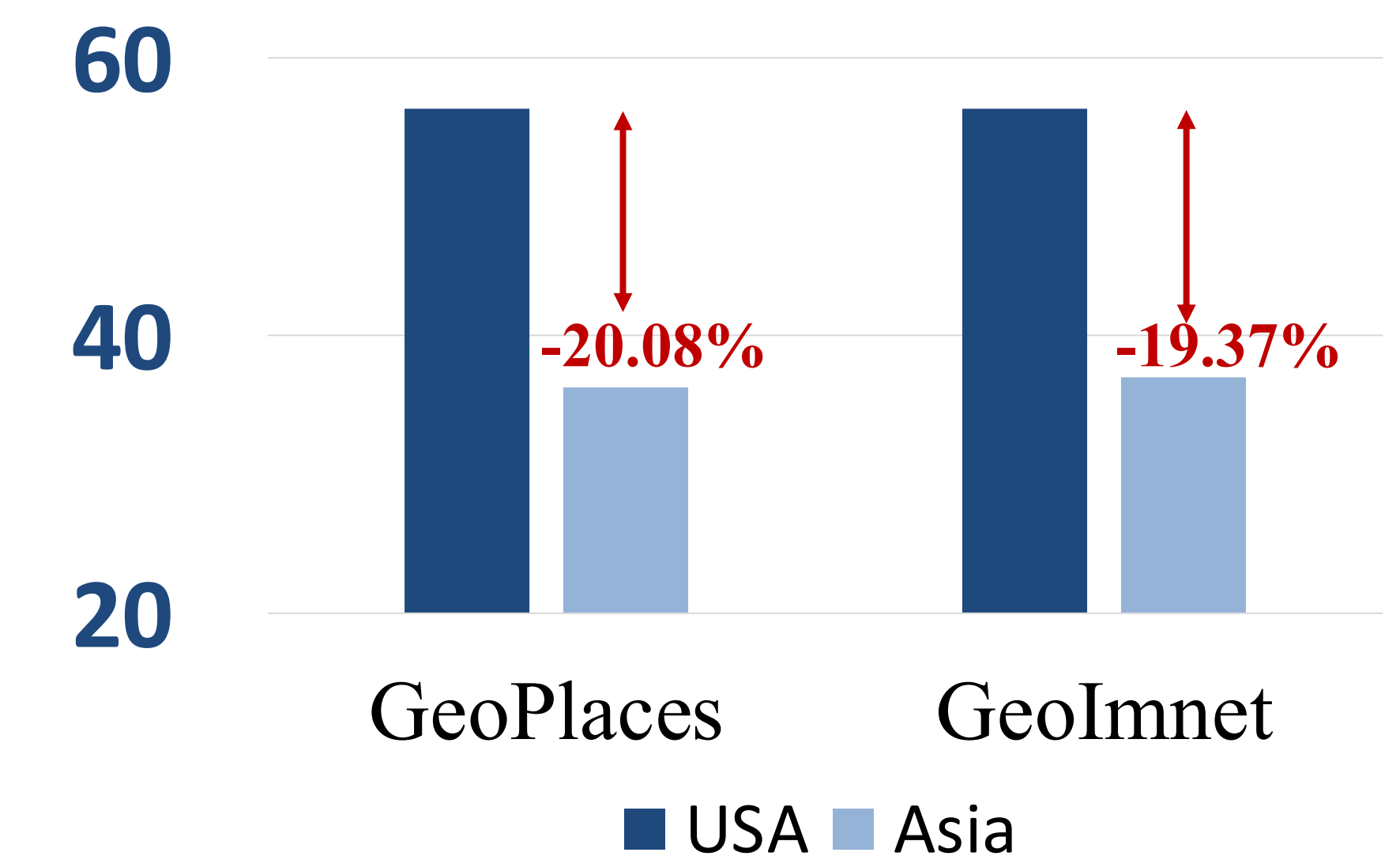
Label Shift
 $P_s(y) \neq P_t(y)$
 Class-distribution shift across geographies

Label Distribution in GeoNet

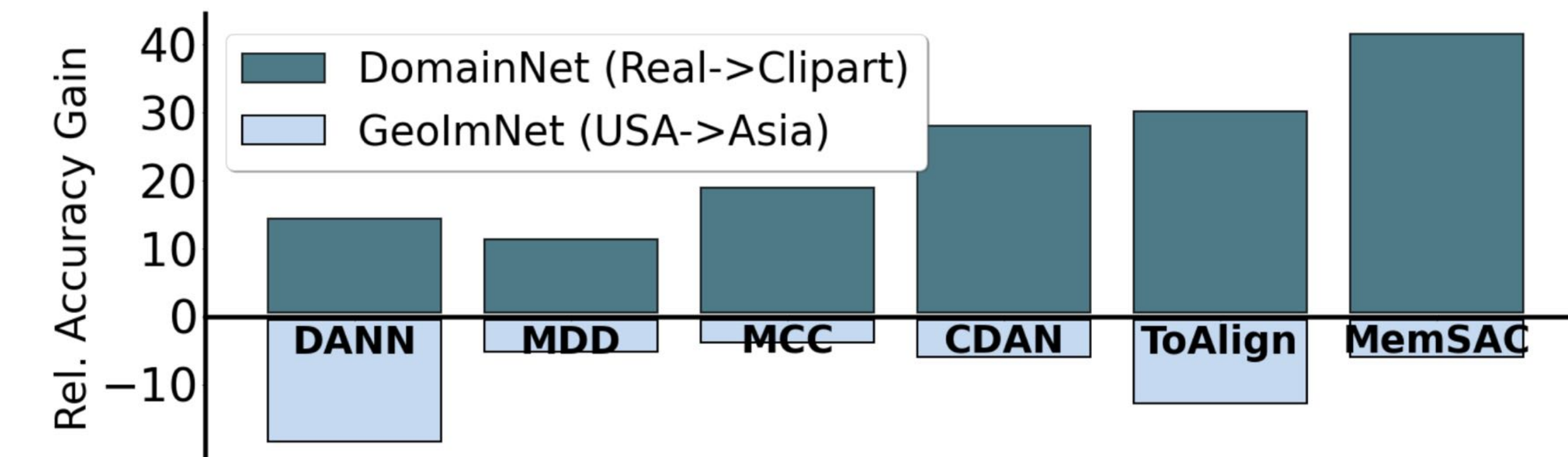


3. GeoNet Benchmarking

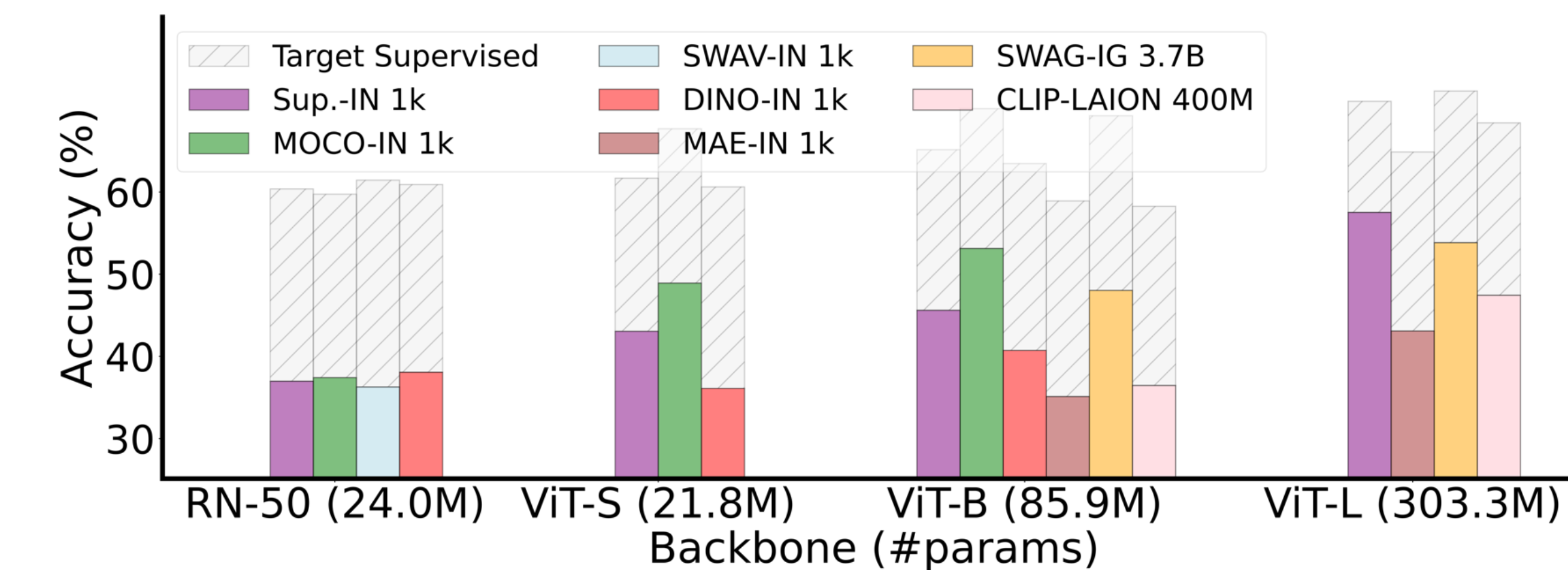
Cross-domain Performance



Unsupervised Domain Adaptation



Large-Scale Pretraining



Unsupervised adaptation and large-scale pre-training do not suffice for bridging geographical disparity between domains.